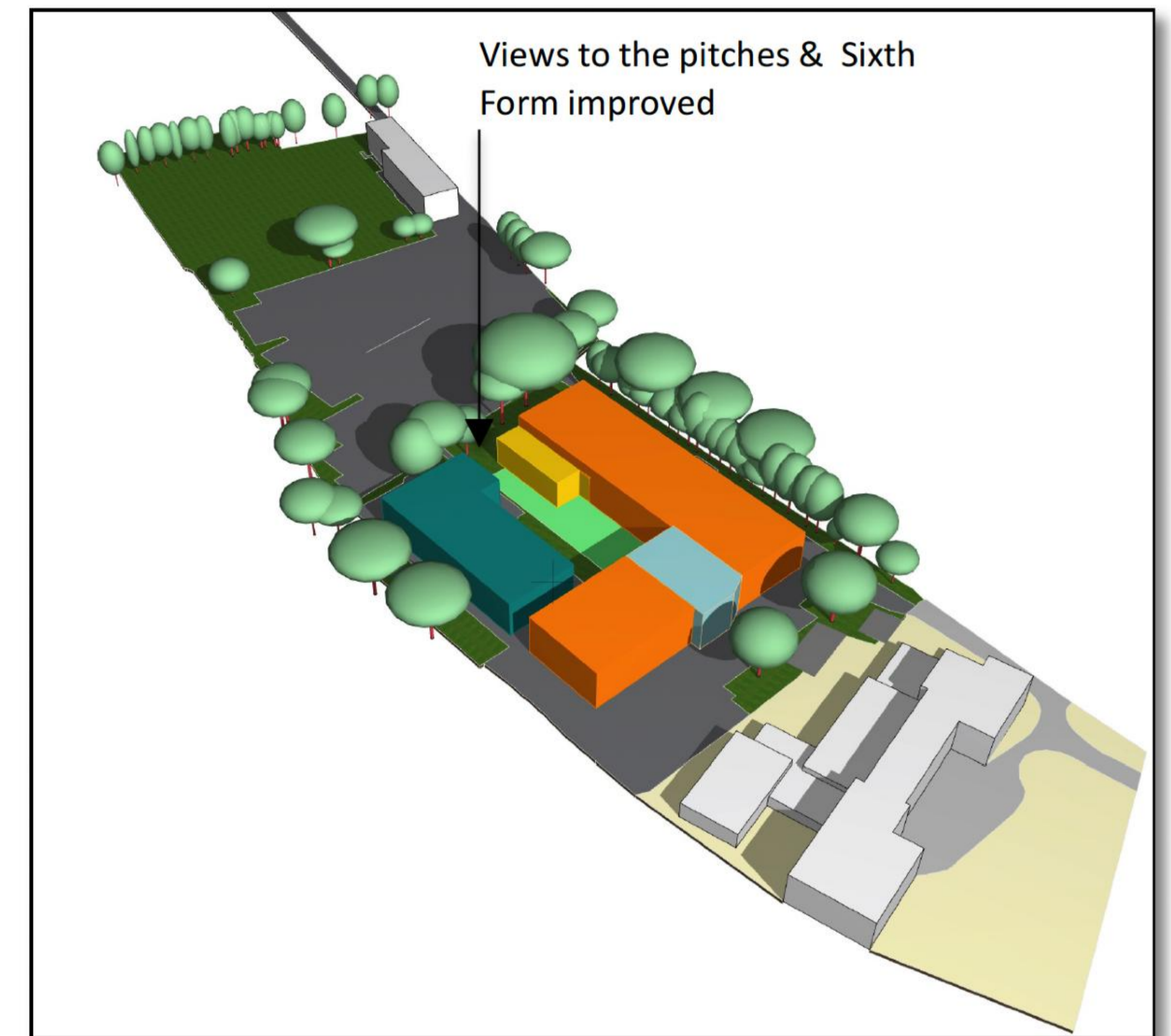
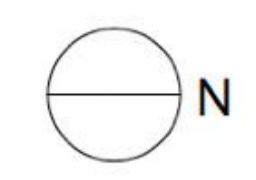
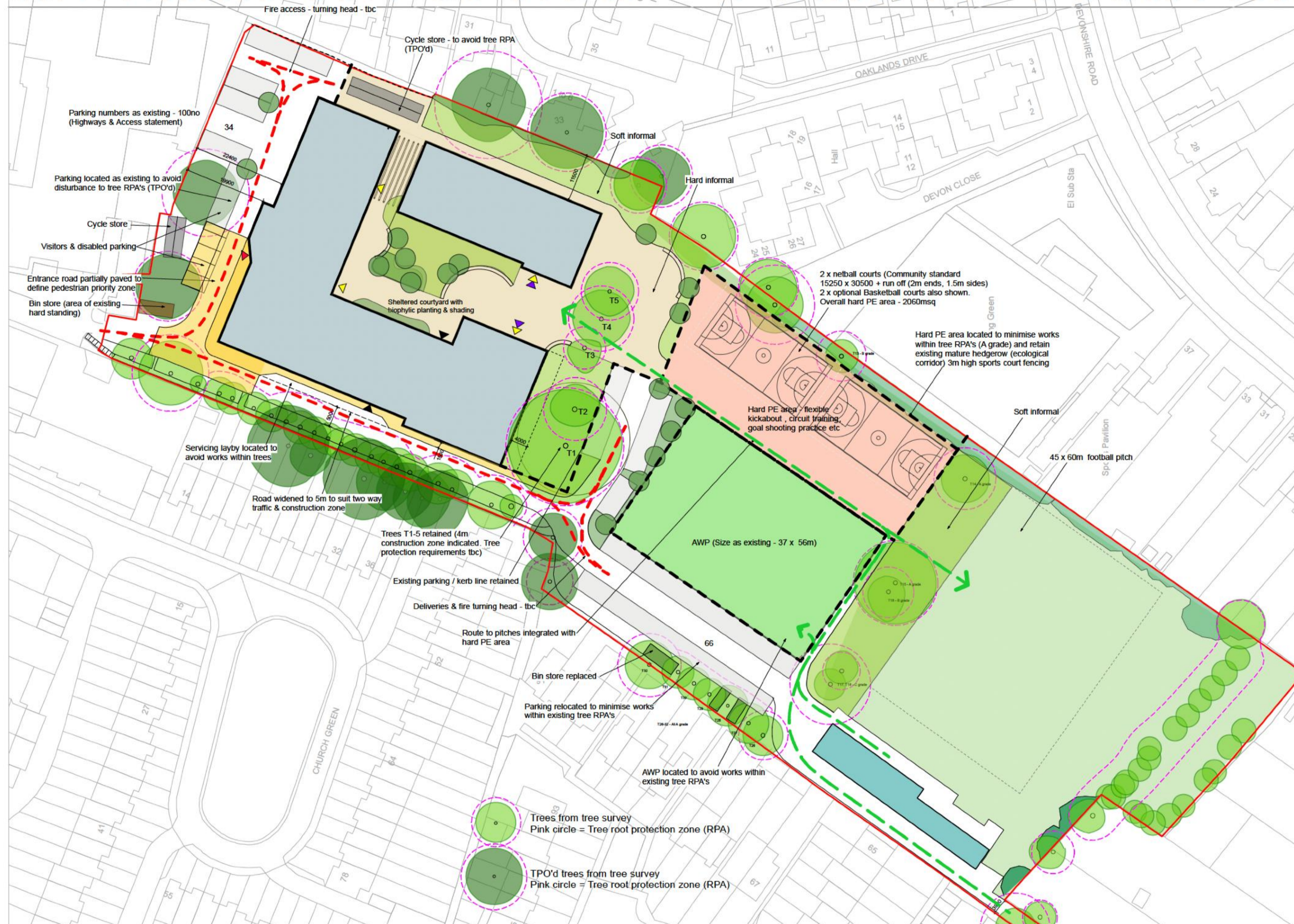


# ALTERNATIVE OPTION – U SHAPED COURTYARD



An extensive design process has been undertaken following the initial site appraisal, and four concept development options were developed as part of that process. Following the appraisal of those four options, a control option was identified. That control option was subsequently developed based on an extensive consultation process between the school, key stakeholders and the design team.

The option that has been developed forms the basis of this submission. It comprises two distinct, new-build blocks. The main teaching block will house all general and specialist teaching with staff spaces, admin offices and ancillary spaces. The second block will be a dedicated sports centre with a 4-court sports hall, activity studio, changing facilities and ancillary spaces as appropriate.

<p>BOND BRYAN</p> <p>e info@bondbryan.co.uk w www.bondbryan.co.uk</p>	<p>BAM</p> <p>King Edward VI Handsworth Wood Girls Academy</p>	<p>Originator project ref 22074</p> <p>Purpose of Issue The Design Process</p>	<p>North</p>	<p>Scale bar</p>	<p>This document is © Bond Bryan Architects Ltd. If in doubt ASK. Drawing measurements shall not be obtained by scaling. Verify all dimensions prior to construction. Immediately report any discrepancies on this document to the Originator. This document shall be read in conjunction with associated models, specifications and related consultants' documents.</p>
		<p>Scale(s) 1:0.79</p> <p>Paper size A1</p> <p>Revision description P01</p>	<p>project originator volume level type role number SPR1037 - BBA - ZZ - 00 - DR - A - 0104</p>	<p>revision</p>	

## THE DESIGN PROCESS